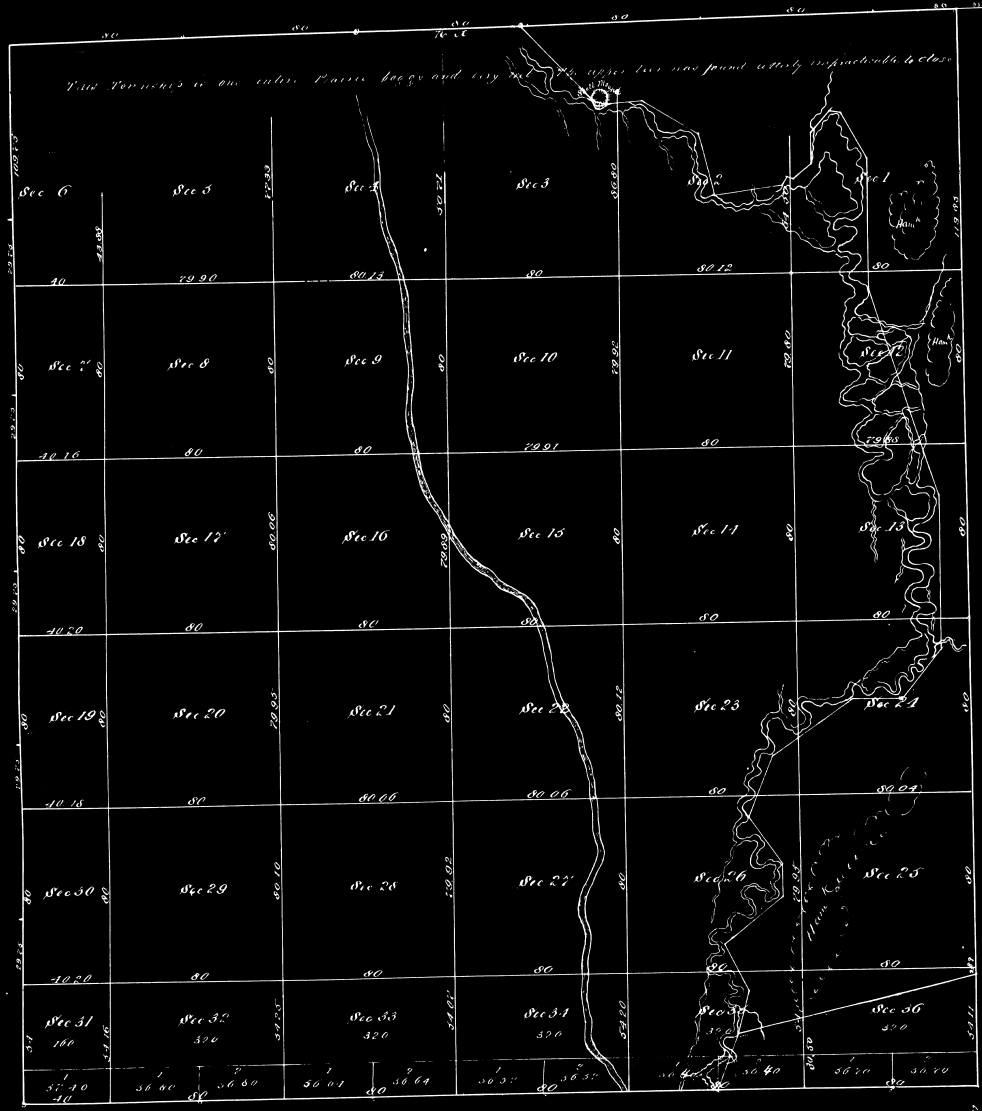


TAXTILS RXXXI B.

See new map

Land District East  
State of Florida.



Contents

No.	Area	No.	Area	No.	Area
1	539.22	25	639.21		
2	440.00	26	639.70		
3	440.58	27	639.21		
4	439.70	28	640.35		
5	440.27	29	640.40		
6	441.74	30	651.65		
7	441.02	31	647.50		
8	439.20	32	643.60		
9	440.40	33	643.20		
10	439.70	34	643.08		
11	439.30	35	642.80		
12	439.70	36	642.40		

Surveyed in the month of February 1845 by J. L. Richard Surveyor.  
 J. L. Richard, Marazion 5° 18' East.  
 Paul Salak new chain man Scale 40 Chains to an inch.  
 The East Boundary was run by A. M. Lewis Surveyor in Dec. 3, 1844.  
 The North Boundary is the Basis of the C. S. of the then Ben. Davis  
 was surveyed by H. Washington Surveyor in Dec. 2, 1845.  
 Richard claims the southern tier of sections in the 1/2 mile front situated  
 by Washington. This tier is accounted for in the differences of measure-  
 ments in the two Plans. Washington ran South, Lewis ran West  
 hence the narrow range of sections in the South of the wide range in the West.  
 Examined Compared with field notes and approved. 10<sup>th</sup> March 1845.

James G. Smith  
 Lt. General