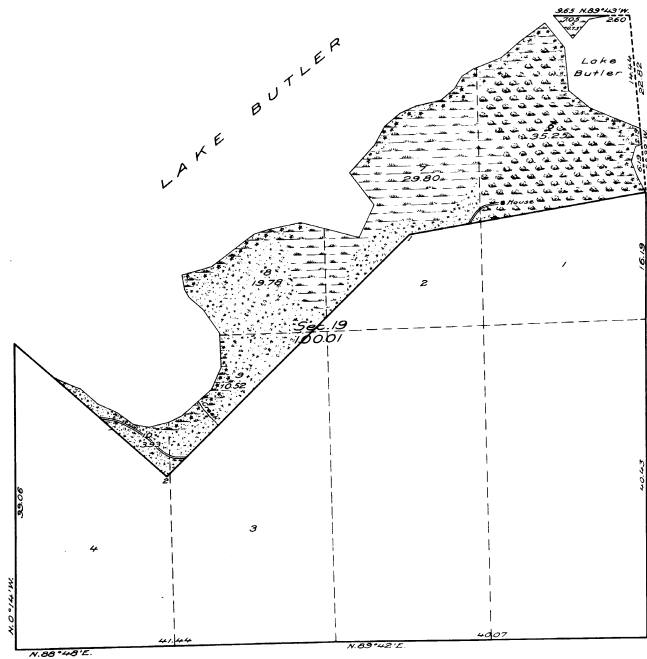


SUPPLEMENTAL PLAT
of
Sec. 19, T. 23 S., R. 28 E., Tallahassee Mer.,
FLORIDA.



The undersigned hereby certifies that the survey delineated upon this plat has been executed under his general direction and in accordance with the approved special instructions, issued pursuant to authority contained in office letter 1010999 "W" W.P., dated February 16, 1922, and that the field notes and the plat of the survey have been carefully verified.

Denver, Colorado.
March 1, 1924.

Supervisor of Surveys.

MEMORANDUM.

This plat is based upon a re-establishment of the lines defining the lands in fractional Section 19, T. 23 S., R. 28 E., of the Tallahassee Meridian, Florida, surveyed by Fred R. Loring, D. S., in 1848, and shown upon the official plat approved July 3, 1849, and upon an extension survey including lands not shown upon said plat. The original lines have been identified and re-monumented with iron posts having brass caps suitably marked and witnessed by new bearing trees.

The heavy irregular line in fractional Section 19 delineates the position of the meander line of Lake Butler as erroneously surveyed in 1848. Riparian rights do not attach to the lands in front of this line as under the usual doctrine. This line has been re-established as a fixed boundary, with adjusted courses and distances based upon the record of the original survey.

Titles and areas based upon the original approved plat remain undisturbed for position and description.

LEGEND.

Scale: 1 inch = 10 chains.

Surveyed by Arthur W. Brown, U. S. Cadastral Engineer, from January 11 to 17, 1923, inclusive, under special instructions for Group No. 17, Florida, dated November 8, 1922, issued by Arthur D. Kidder, Associate Supervisor of Surveys, which were approved by the Commissioner of the General Land Office on November 22, 1922.

Area of lands surveyed = 100.01 Acres, not shown upon the plat approved July 3, 1849.

Areas of previously surveyed lands not shown.

MB
Department of the Interior,
General Land Office.

2-21-24
Washington, D. C., February 20, 1925.

The above supplemental plat of Section 19, Township 23 South, Range 28 East, of the Tallahassee Meridian, in the State of Florida, is strictly conformable to the field notes of the survey thereof, on file in this office, which have been examined and approved.

Commissioner and ex officio
U. S. Surveyor General for Florida.