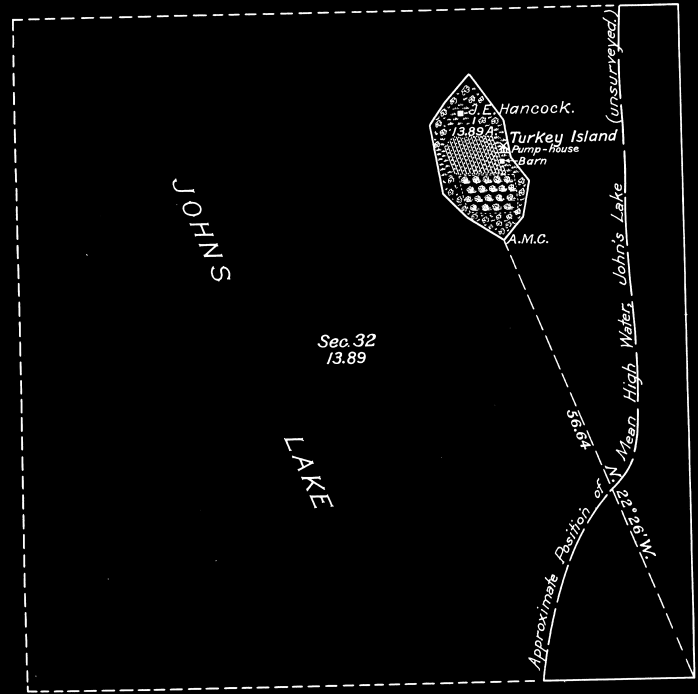


PLAT OF TURKEY ISLAND
in
Johns Lake,
Section 32, T.22 S., R.27 E., Tall. Mer.,
FLORIDA.



LEGEND.

Scale: 1 inch = 10 chains.

Surveyed by Albert Smith, Jr., U. S. Cadastral Engineer,
on April 13, 1920, under special instructions dated February
19, 1920, issued by Arthur D. Kidder, Associate Supervisor of
Surveys, which were approved by the Commissioner of the General
Land Office on February 26, 1920.

Area of lands surveyed = 13.89 acres.

Included with surveys under Group No. 4, Florida.



Washington, D. C.
July 12, 1920.

The undersigned hereby certifies that the survey delineated upon this plat has been executed under his general direction and in accordance with the approved special instructions issued pursuant to authority contained in office letter 809774 "E" J H B, dated Nov. 19, 1918, addressed to the Secretary of the Interior (Approved Nov. 23, 1918), and in office letter dated December 6, 1918, requesting the undersigned to prepare the necessary special instructions, and that the field notes and plat of the survey have been carefully verified.

A. D. Kidder
Associate Supervisor of Surveys.

DEPARTMENT OF THE INTERIOR,
GENERAL LAND OFFICE.
Washington, D. C., July 16, 1920.

The above plat of Turkey Island in Johns Lake in Section 32, Township 22 South, Range 27 East, of the Tallahassee Meridian, in the State of Florida, is strictly conformable to the field notes of the survey thereof, on file in this office, which have been examined and approved.

Arthur D. Kidder
Commissioner and ex officio
U. S. Surveyor General for Florida.