

SUPPLEMENTAL PLAT

of

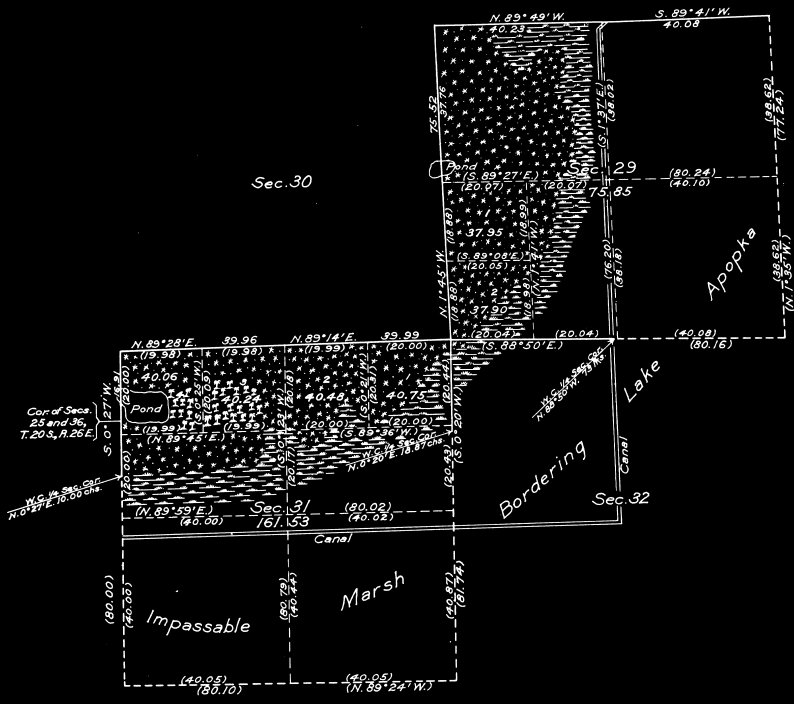
Sections 29 and 31, T. 20 S., R. 27 E.,

Tallahassee Meridian,

FLORIDA.

Scale: 20 chains to an inch.

Survey Accepted March 28, 1917
G. L. O.



Memorandum.

"All of Sec. 29, except Lots 1 & 2, and all of Sec. 31, except Lots 1 to 4, incl, approved to the State of Florida, Jan. 25, 1855, and patented to the State on June 26, 1856, as swamp and overflowed land, under the provisions of the Act of Congress approved Sept. 28, 1850 (9 Stat., 519)."

LEGEND

Surveyed by Donald B. Clement, U. S. Transitman, from March 1 to 18, 1916, incl, under special instructions dated January 19, 1916, issued by Arthur D. Kidder, Supervisor of Surveys, which were approved by the Commissioner of the General Land Office on January 26, 1916.

Courses and distances in parentheses are calculated, and are shown for the purpose of indicating the position of certain section lines, as well as the method of subdividing the sections. The section boundaries delineated by broken lines extend across impassable marsh and have not been monumented by the usual section and quarter-section corners.

Area of lands surveyed = 237.38 acres.

D.B.C. Department of the Interior,
General Land Office,
Washington, D. C., March 28, 1917.

G. L. O.

The above supplemental plat of Secs. 29 and 31, T. 20 S., R. 27 E., Tallahassee Meridian, Florida, is strictly conformable to the field notes of the survey thereof, on file in this office, which have been examined and approved.

Commissioner and ex officio
U. S. Surveyor General for Florida.